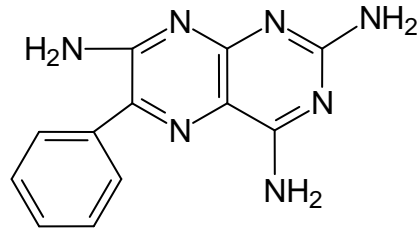


# ASSAY PERFORMANCE

## Triamterene



Method	LC-MS/MS
Matrix	Human Plasma
Anti-coagulant	K <sub>2</sub> EDTA
Storage Temperature	-20 °C
LLOQ	2 ng/mL
ULOQ	384 ng/mL
Sample Volume	100 µL
Precision & Accuracy	
LLOQ QC	4.8% CV; -6.5% Bias
Low QC	3.2% CV; 2.3% Bias
Mid QC	1.5% CV; 0.3% Bias
High QC	2.0% CV; -3.9% Bias
Above Range QC (4x Dilution)	1.5% CV; -7.9% Bias
Stability	
Short-Term (Bench-Top)	25 hrs 40 min
Long-Term	124 days at -20 °C
Freeze/Thaw Cycles	3
Comments	
Method Number(s)	V2291P1